

**Vancore** 

*Worldwide Percussion*

Product information  
*Marimbas*



**PSM 501**

*4.3 octave A2 - C7 African Padouk*

## Performing Standard Series

A complete series of mallet instruments designed for the budget minded students, orchestras and ensembles. These instruments feature the same selected bar materials and carefully handcrafted resonators, which are used for the Custom Classic Series. The frames of these instruments are manufactured using European Ashwood and high grade steel components. Height adjustment of these models can be executed manual very easily.

## Performing Standard 500 Series | PSM501

These unique marimbas are featured with our newly designed ICS system (Integrated Cord Suspension). The innovative frame has special designed steel layers and end pieces. Precision lasercut bar support arms are angled to insure that each and every bar is supported exactly to the nodal point. Professional sized bars, manufactured out of selected kiln dried quarter sawn excellent choice African padouk.

Depending on model number you can also choose for durable Vibercore Synthetic bars. The suspension system is modular and functions as an integral part of an overall ergonomically and stylish designed instrument.



### Endpieces

To realize the most stable and precise construction, rails and endpiece are very carefully designed to make that perfect match. All end pieces are made out of first choice solid Ash wood, carefully shaped and CNC machined.

Inside the end piece a cut out chamber gives room for a solid special metal sheet for perfect and sturdy mounting of the rails.

To achieve perfection in construction and quality we always keep an eye on the natural look of the mallet instruments. A little different but perfectly designed and engineered. Vancore stands for innovation!



### Manual Height Adjustment

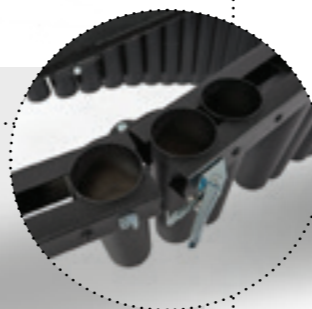
Height Adjustment of these models can be executed manual very easily, through a one tubes height adjustment.

### Bars | African Padouk

Material: Concert Quality African Padouk | *Pterocarpus Soyauxii*

As a perfect alternative for Honduran Rosewood Vancore is using African Padouk as basic material for bar manufacturing. This African hardwood stands for a warm character and rich sustain. Through sizes of logs and availability of quarter sawn wood, the bars made out of African Padouk are representing a perfectly balanced marimba keyboard in performance and tonality.

65x27 | 58x25 | 53x25 | 48x25 | 44x23 | 40x21 mm



### Resonator Clamp System

Vancore resonators are individually hand tuned and assembled using an exclusive mounting system. This system eliminates every kind of rattle or extraneous noise.

Unlike other resonators, welded or riveted, our system employs minimal contact technology. This virtually eliminates potential problems.



### Castors

All stands are equipped with double rolled caster for easy operation.

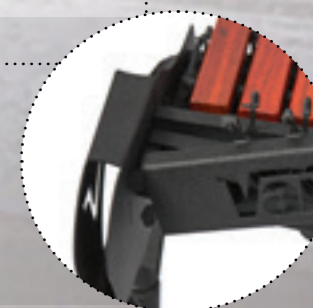
Carefully chosen casters come with high grade bearings and brakes.



### Integrated Rail System

Our designers created a new and highly innovative concept to avoid the common and major problem with layers..... On top of that, the suspension and layer are integrated. One solution, on unique concept!

When only the best is good enough!



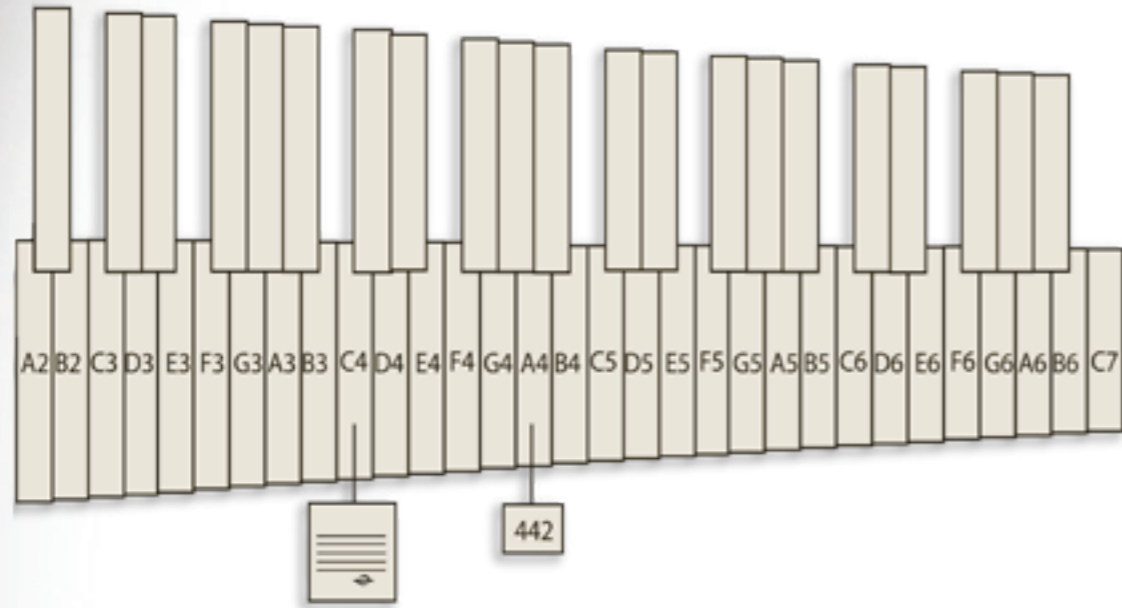
### Floating Bar Suspension | FBS

Most notable is the new Floating Bar Suspension System (FBS). This proprietary bar support system actually increases bar resonance by 20%! Precision laser cut bar support arms are angled to insure that each and every bar is supported exactly to the nodal point.

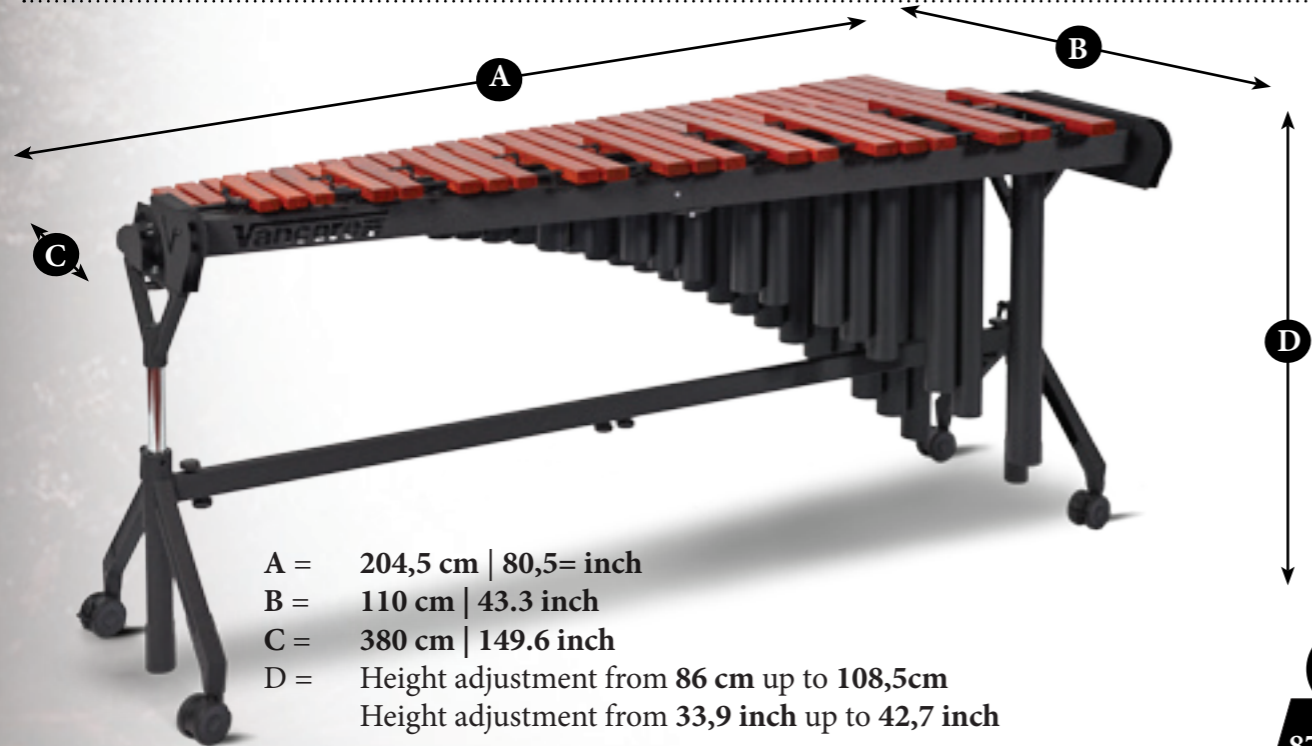
91,5 cm  
108,5 cm

Height adjustment

**RANGE OVERVIEW**



**DIMENSIONS & WEIGHT**



- A = 204,5 cm | 80,5= inch
- B = 110 cm | 43.3 inch
- C = 380 cm | 149.6 inch
- D = Height adjustment from 86 cm up to 108,5cm  
Height adjustment from 33,9 inch up to 42,7 inch

**87.2 KG**  
**192 LBS**  
Instrument Weight

**PACKED WEIGHT AND DIMENSIONS PSM 501**

Boxnumber	Content	Box Sizes		Weight	
		CM	INCH	KG	LBS
Box 1 of 2	Frame/Resonators	130x58x28	51.2x22.8x11	59.0	130
Box 2 of 2	Stand/Bars	77x62x44	30.3x24.4x17.3	30.2	66.6

**2**  
Total number of boxes

**89.2 KG**  
**199 LBS**  
Total Packed Weight

**Vancore Nederland b.v.**  
Tolhuswei 7a - 9  
8501 ZP JOURE - The Netherlands  
Tel: +31 513 415127  
Fax: +31 513 413038  
Email: info@vancore.nl